

Laboratory of Bioregulatory Science



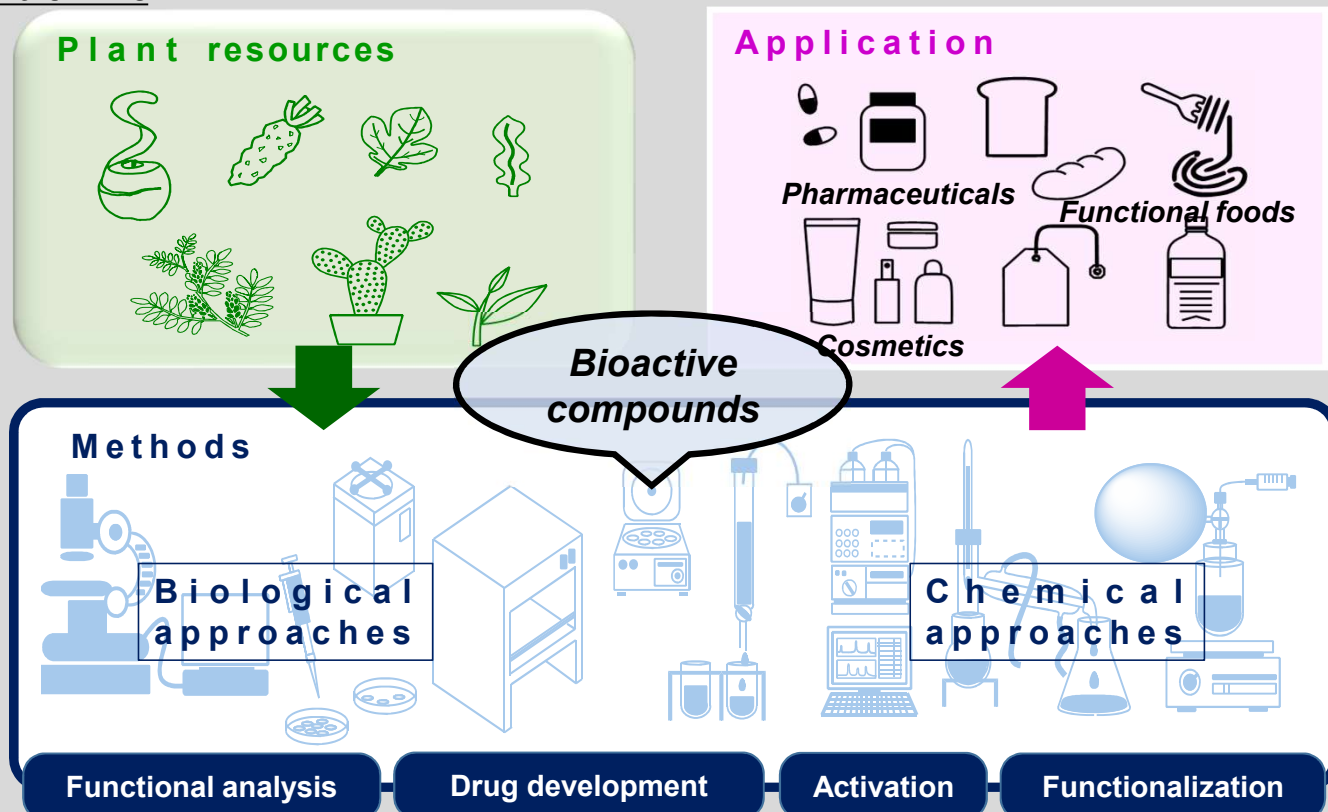
Professor
Hideaki YAMAGUCHI



Associate Professor
Hiromi HAMAMOTO

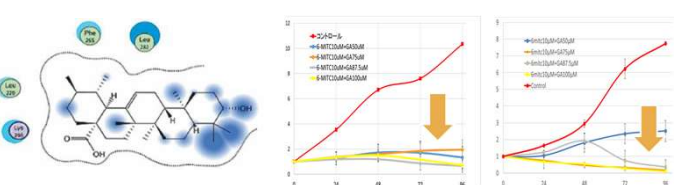
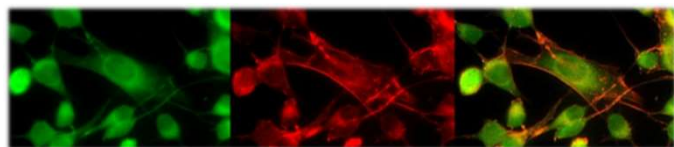
| | | |
|----------|-----------------------------------------------------------------------------------------------------------------------------------------------------------|----------------------------------------------------------------------------------------------------------------------------------------------------------------|
| STAFF | Professor Hideaki YAMAGUCHI | Associate Professor Hiromi HAMAMOTO |
| TEACHING | Plant Life Science, Pesticide Science I, Pesticide Science II, Laboratory Works in Biological Chemistry II, Seminar I, Seminar II, Undergraduate Research | Bio-organic Chemistry, Cosmetic Chemistry, Bioregulatory Chemistry, Laboratory Works in Biological Chemistry II, Seminar I, Seminar II, Undergraduate Research |

Outline



Keywords: SFME cells, *r/m* HM-SFME-1 cells, *In silico* analysis, Antitumor drug, Glutathione, 11 β -HSD2, GCL, Antioxidant activity, Organic Synthesis, Oxidation of phenolic compounds, Reaction field

Anticancer drug development for the present and future generations utilizing plant components and their derivatives



a. Utilization of local specialties of Aichi for functional food development

b. Activation of enzyme using plant-derived components

