

Laboratory of Landscape Analysis



Associate Professor
Hiroshi Hashimoto

Assistant Professor
Tomoko Narazaki

STAFF	Associate Professor Hiroshi Hashimoto	Assistant Professor Tomoko Narazaki
TEACHING	Landscape Design Landscape Ecology and Management Landscape Planting Advanced Landscape Design Advanced Theory of Public Open Spaces	Biostatistics Landscape Analysis Environmental Systems Science

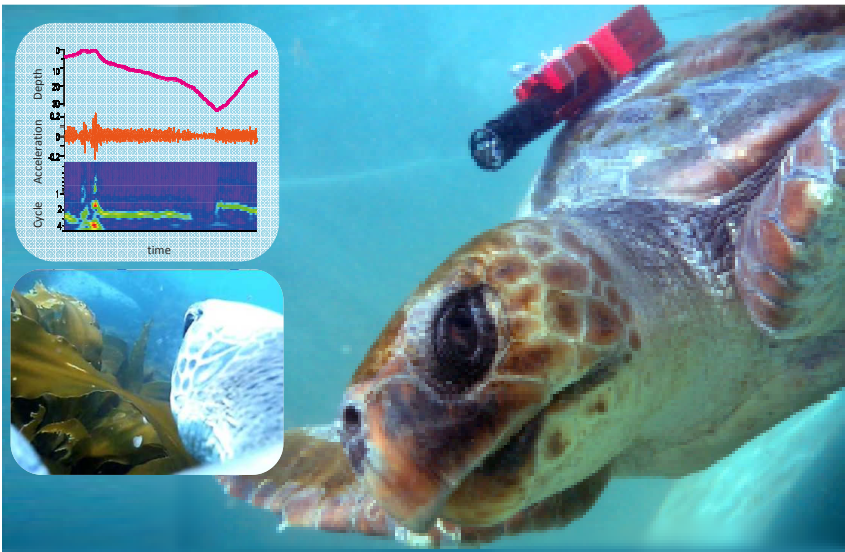
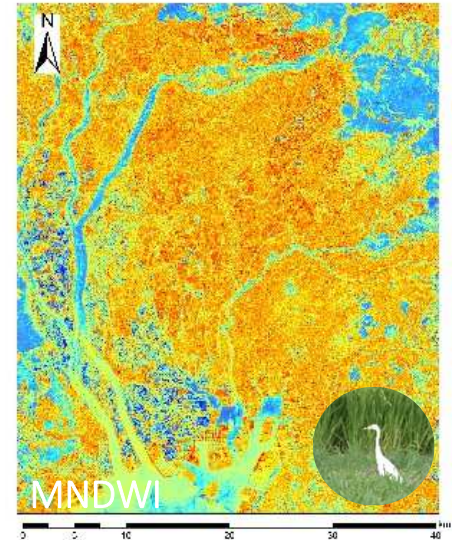
Landscape Ecology, Analysis & Design

Our research spans a variety of landscape, from green spaces in urban areas and satoyama to global-scale natural environments such as oceans. We apply field studies, remote sensing, bio-logging, statistical modeling and GIS to improve ecological understanding of various habitats as well as to assess human impacts. We tackle various environmental problems seeking for ideal landscapes where human and wildlife coexist.

Wildlife Habitat Suitability Modelling

Historical Land Use & Landscape Changes

Urban Greening & Landscape Design



Bio-logging science

Human impact assessment

Harmony with Nature Landscape Conservation

Recent publications:

Hashimoto, Natuhara & Morimoto (2005) A habitat model for *Parus major minor* using a logistic regression model for the urban area of Osaka, Japan. *Landscape and Urban Planning* 70: 245-250.
 Hashimoto, Sugawa & Kameda (2020) Characteristics of the Avifauna of Lake Biwa and Its Long-term Trends. *"Lake Biwa: Interactions between Nature and People second Edition"*, p237-242. Springer
 Narazaki T, Nakamura I, Aoki K et al. (2021) Similar circling movements observed across marine megafauna taxa. *iScience*, 24(4):102221
 Narazaki T, Isojunno S, Nowacek DP et al. (2018) Body density of humpback whales (*Megaptera novaeangliae*) in feeding aggregations estimated from hydrodynamic gliding performance. *PLoS ONE*. 13(7): e0200287